

Virusee®

COVID-19 IgM/IgG Lateral Flow Assay

**One drop of blood
10 minutes get the reliable result**



Overview

Novel Coronavirus causes acute pneumonia and is easily transmitted person to person and person to infected objects. After emerging, patients infected by Novel Coronavirus Disease (COVID-19) have been successively discovered all over the world in a short time. At present, the global cumulative number of proved cases has reached 693,224 cases, and the global cumulative death has reached 33,106 cases, patients with COVID-19 are distributed in more than 186 countries and regions, and still increasing rapidly. Nowadays, the diagnosis method widely used in clinical is real-time PCR. However, nucleic acid detection often gives false negative results due to sampling methods, virus titers, etc.

An accurate and rapid detection is crucial in weathering the COVID-19.

Epidemiology

Source of infection: The novel coronavirus infected patients, **asymptomatic patients can also be a source of infection**

Transmission: Respiratory droplets and Close contact transmission (Main) ,
Aerosol transmission

Susceptible population: Generally susceptible

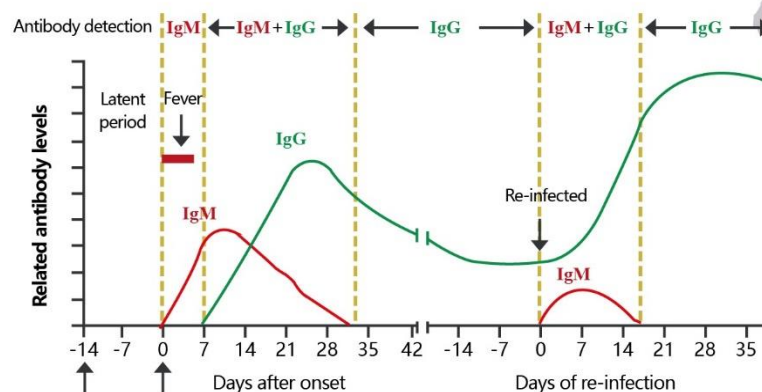
Novel Coronavirus is more contagious than SARS-CoV and MERS-CoV

Generally Susceptible

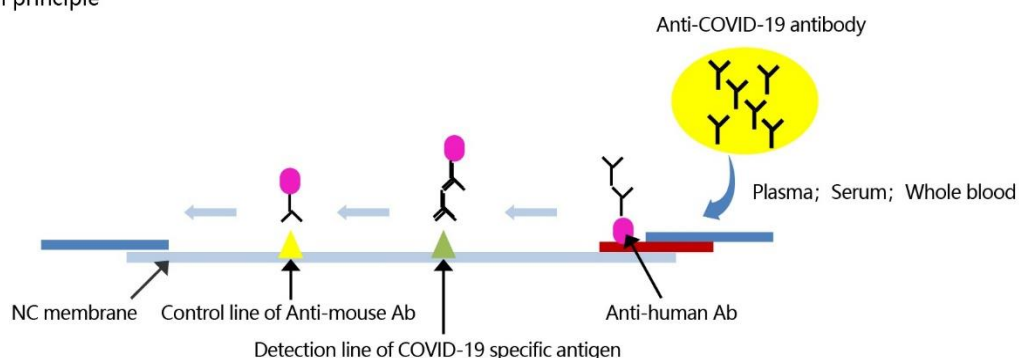
Screening Tests are Acutely Needed

Experimental Principle

Relationship between antibody concentration and viral infection stage



Detection principle

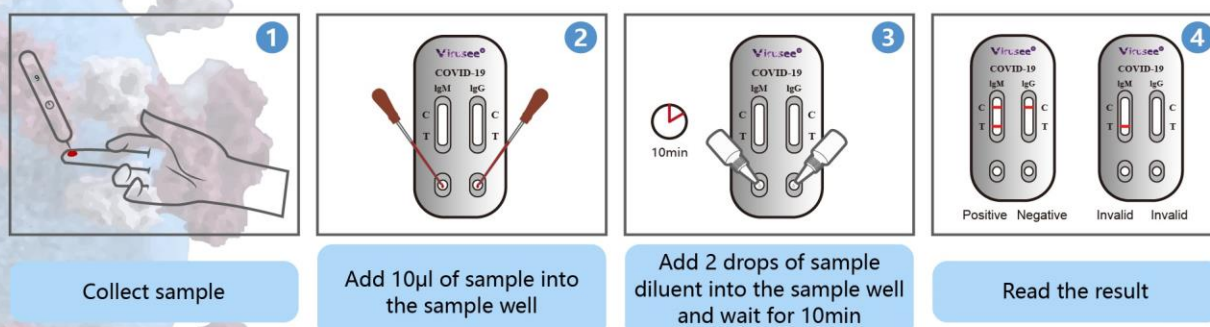


Product Characteristics

Basic Parameters	COVID-19 IgM/IgG Lateral Flow Assay
Method	Lateral Flow Assay
Specification	20 tests/kit
Sample type	Whole blood / Serum / Plasma
Sample volume	10 µl
Detection time	10 min
Detection objects	Novel Coronavirus
Stability	The kit is stable for 2 years at 2°C-30°C
Sensitivity	97.33%
Specificity	99.20%

Operation Procedure

Cassette type (20 tests/kit)



Product Advantages

Point-Of-Care Testing

- ★ **Rapid:** Obtain result within 10 min
- ★ **Simple:** Easy to use, only need one drop of blood
- ★ **Intuitive result:** There is no need for calculation and instrument, visual reading result
- ★ **Economic:** Product can be transported and stored at room temperature, reducing costs
- ★ **Low risk:** Testing blood sample, reducing the risk of sampling process

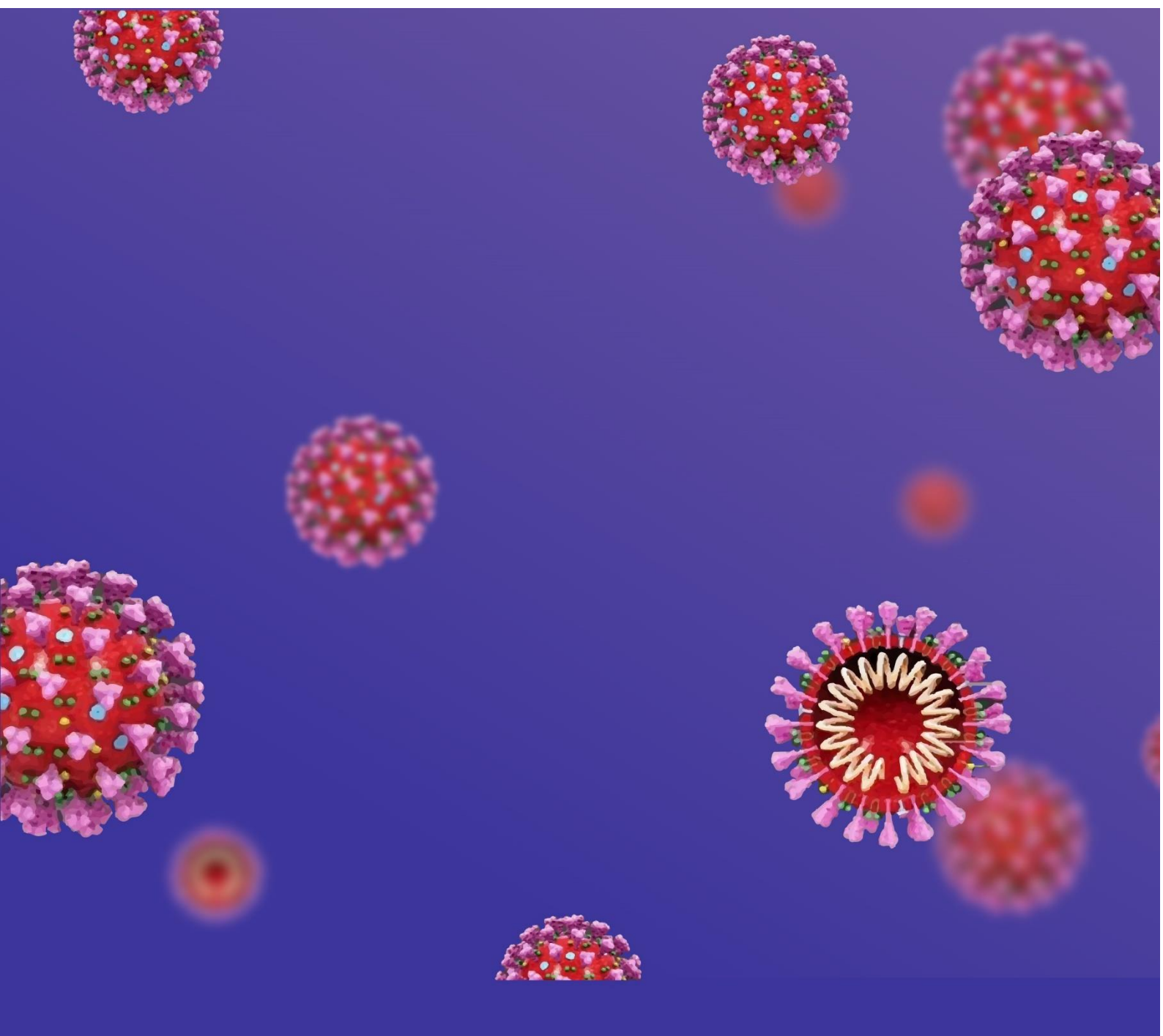
Suitable for screening on-site, bedside, outpatient

Reference

1. National Health Commission of the People's Republic of China. The diagnosis and treatment suggestion of novel coronavirus pneumonia [online].

Available at: <http://www.nhc.gov.cn/zyygj/s7653p/202002/8334a8326dd94d329df351d7da8aefc2.shtml>

[Accessed 19 February 2020]



Tel: +86(22)60978609 ext. 8603/8606/8608/8609

Fax: +86(22)60978609-804

E-mail: marketing@era-bio.com / customer@era-bio.com

Web: www.era-bio.com



 **Genobio Pharmaceutical Co., Ltd.**

Add: 2-1,2,3-101, No.2 Zone, Binlv Industrial Park, Binhai
Tourism Area, Binhai New Area, Tianjin 300480, P. R. China



Tianjin Era Biology Technology Co., Ltd.

Add: 1601, Building C2, TEDA MSD-C, No. 79, 1st Avenue, Tianjin
Economic-Technological Development Area, Tianjin 300457,
P. R. China

Genobio is wholly-owned subsidiary of Era Biology Group